



# JURYS INN

Air Handling Unit Control



With an existing control system failing to achieve the required comfort levels EPA Ltd were brought on site and tasked with supply and commission of a bespoke controls solution.

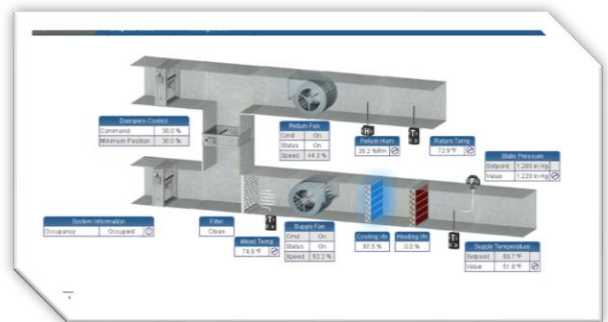
Not only were the comfort levels an existing issue, there had also been a failure of frost prevention routines which had led to mechanical issues on site.

EPA Ltd chose a **Distech ECY controller** with an integrated web browser to display the animated graphics and alarm handling. Easily expandable for future works on site.



All controls were housed in an 800 x 600 MCC integrating with wall field mounted VSD's and devices

With a strict deadline for completion EPA Ltd designed, built and commissioned on time ensuring fully operational plant over the Christmas period.



For a further details on this project or any other enquiries contact [service@epaltd.com](mailto:service@epaltd.com)

Church House  
Main Street  
Leixlip  
Co, Kildare

[www.epaltd.com](http://www.epaltd.com)



353.1.6155660 ph  
353.1.6155667 fax  
[service@epaltd.com](mailto:service@epaltd.com)  
[www.epaltd.com](http://www.epaltd.com)