



Mary Immaculate College Limerick - Mount St. Vincent, O’Connell Avenue. Study Halls.  
The former Mount Convent complex from the 19th century is a protected structure and covers approximately 4000 square metres.

Our customer – **Eco Mechanical Solutions** – engaged EPA Ltd to engineer, supply and commission a Motor Control Centre with suitable BMS control and hardware, in accordance with the Consultant – **Moloney Fox Consulting** – specifications.

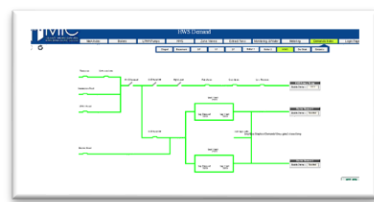
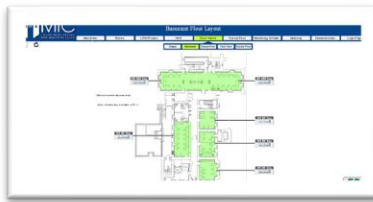
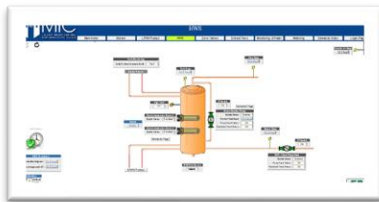
**Scope of Works:**

- Supply, install and commission new BMS controls for the new Mechanical and Electrical Services systems in the Mount building
- Supply and install new front end BMS equipment.
- Supply and commission new boiler house control panel (MCC).
- Supply and commission all control field devices such as motorized valves, sensors, stats etc.as indicated on the drawings and schedules
- Testing and Commission control system
- Demonstration and training of the commissioned system to the end client.



EPA Ltd engineered, supplied and commissioned a boiler house MCC. A bespoke Trend IQ4E controller was chosen for this project due to its flexibility and capability of future expansion at minimum costs.

A Trend 963 frontend supervisor software package complimented the IQ4E controller.



For a further details on this project or any other enquiries contact [service@epaltd.com](mailto:service@epaltd.com)

[www.epaltd.com](http://www.epaltd.com)



Church House  
Main Street  
Leixlip  
Co, Kildare

353.1.6155660 ph  
353.1.6155667 fax  
service@epaltd.com  
www.epaltd.com